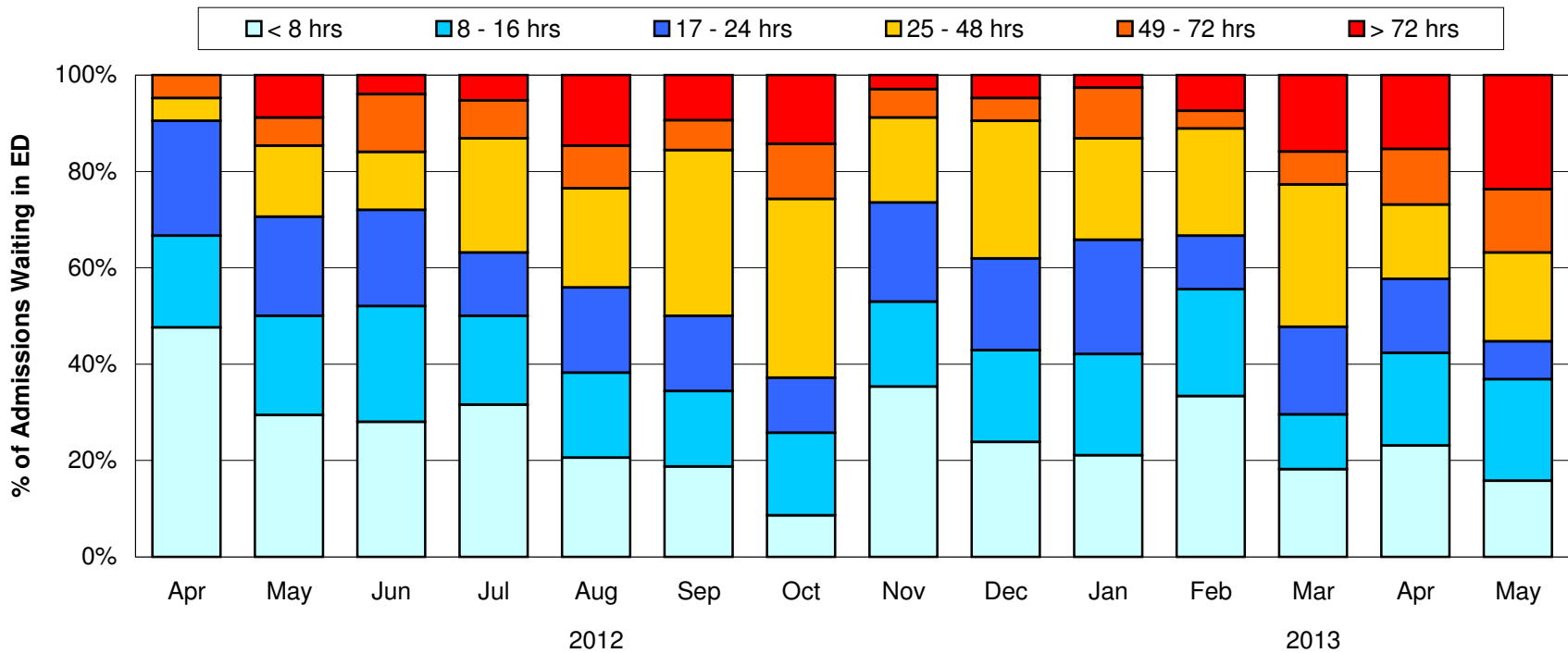


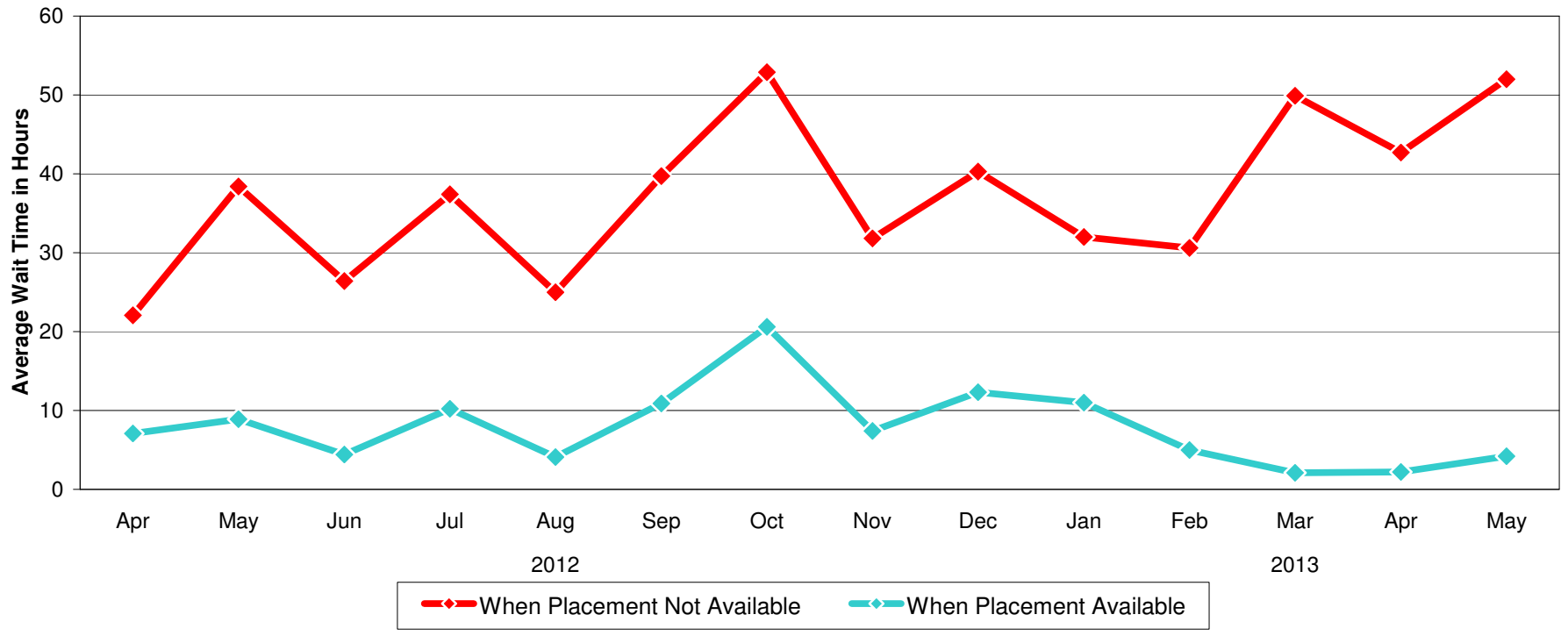
ED Wait Times for Involuntary Admissions April 2012- May 2013



	2012							2013						
	Apr	May	Jun	Jul	Aug	Sep	Oct	Nov	Dec	Jan	Feb	Mar	Apr	May
Average ED Wait Time	10.67	22.71	18	26	33.5	31.8	42.4	24.3	22.5	26	22.4	39.4	26.9	50.8
< 8 hrs	10	10	7	12	7	6	3	12	5	8	9	8	6	6
8 - 16 hrs	4	7	6	7	6	5	6	6	4	8	6	5	5	8
17 - 24 hrs	5	7	5	5	6	5	4	7	4	9	3	8	4	3
25 - 48 hrs	1	5	3	9	7	11	13	6	6	8	6	13	4	7
49 - 72 hrs	1	2	3	3	3	2	4	2	1	4	1	3	3	5
> 72 hrs	0	3	1	2	5	3	5	1	1	1	2	7	4	9

Analysis includes all EE/Warrants with notation of time in ED. This is complete time from when a client arrives at ED until departure.

ED Wait Times for Involuntary Admissions April 2012- May 2013



Wait Time in Hours	2012											2013		
	Apr	May	Jun	Jul	Aug	Sep	Oct	Nov	Dec	Jan	Feb	Mar	Apr	May
Average ED Wait Time	11	23	18	26	34	32	42	24	23	26	22	39	27	51
When Placement Available	7	9	4	10	4	11	21	7	12	11	5	2	2	4
When Placement Not Available	22	38	26	37	25	40	53	32	40	32	31	50	43	52
When Placement Not Available (From time of no placement)	18	33	20	31	36	34	46	28	33	29	27	47	42	47
Maximum Wait Time	58	88	48	120	106	121	236	245	111	145	113	218	282	330
# Clients with Unavailable Placement	10	19	15	22	24	22	30	20	14	27	21	43	26	38

"When placement unavailable" includes all EE/Warrants with notation of time in ED and for whom placement was not immediately available. "When placement available" includes all EE/Warrants with notation of time in ED and for whom a placement was available at the time of first referral. Both times reflect complete time from when arrival at ED until departure. "When Placement Not Available (From time of no placement)" reflects time from placement deemed unavailable to until departure.